

TECHNICAL BUYING GUIDE 2021

# HIPRO MINIBARS

AUSTRALIA & NEW ZEALAND

 **DOMETIC** **PROFESSIONAL**

## MINIBARS

### INTRODUCTION



# DOMETIC HIPRO MINIBARS

## ALWAYS AT YOUR SERVICE

Premium can't be measured. It's all about the first impression, elegant design, and the silence that your guests appreciate. What can be measured is efficiency. With improved cooling performance and up to 40% lower energy consumption, it's clear to see why the HiPro

range is considered the world's best minibar. After more than 50 years in the hotel business and 6 million installed units, we're proud to say that we're pioneering the hotel industry. Again.

### 1. COST REDUCTION

The new HiPro offers best-in-class energy efficiency – and clever connectivity features that will reduce operational cost.

### 2. SUSTAINABILITY

We work hard to achieve even lower footprints within manufacturing as well as energy consumption.

**PIONEERING  
THE HOTEL  
INDUSTRY. AGAIN.**

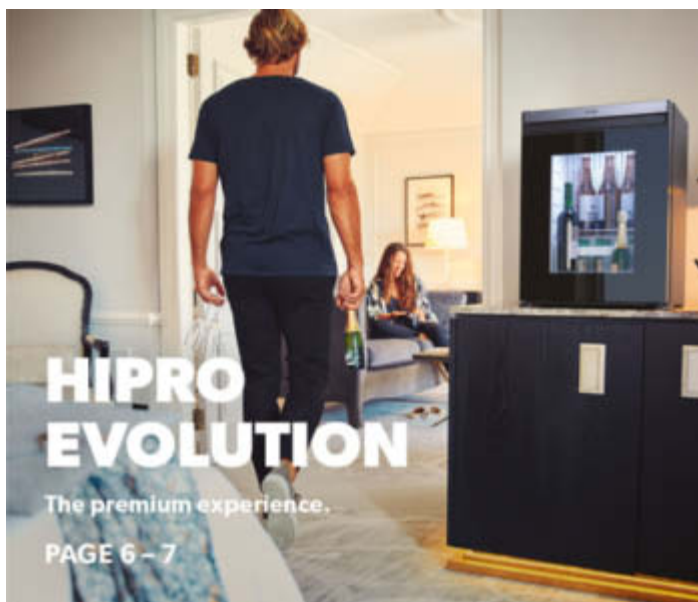
We believe in sustainable innovation for a better guest experience.

### 3. GUEST EXPERIENCE

HiPro will not only deliver premium cooling performance – it is also an attractive and sales promoting feature in the guest room.

### 4. STRONG PARTNERSHIP

After more than 50 years in the hotel business we have a strong promise to ensure care free maintenance.



---

## INTRODUCTION

Energy saving technologies 4 - 5

---

## MINIBAR RANGES

HiPro Evolution 6 - 7  
HiPro Alpha 8 - 9

---

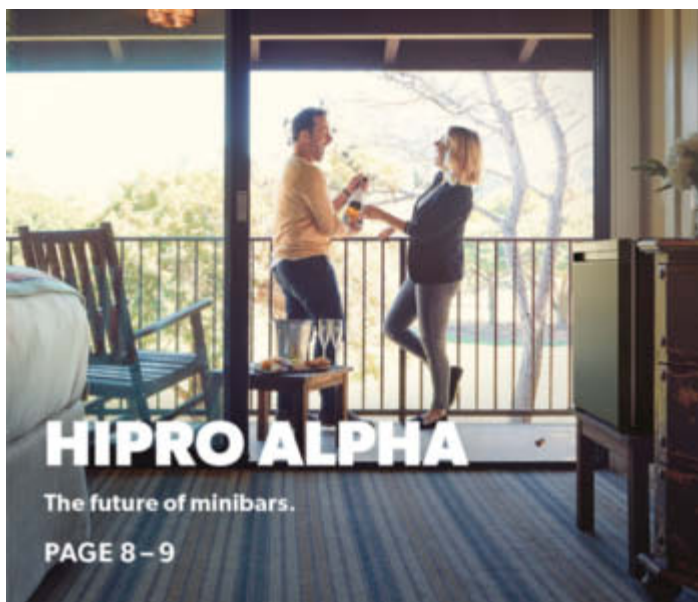
## INSTALLATION

Ventilation guide 12 - 13

---

## HIGHLIGHTS AND USPS

The world's best minibars 14  
Discover all options 15





Dometic HiPro minibars are available with two different cooling technologies: absorption and compressor cooling. All have been improved and refined in the new HiPro range with the best cooling capacity and lowest energy consumption on the market up to 40% less compared to standard units.

- Improved cooling performance
- Best-in-class energy efficiency
- Sustainable production and footprint
- Global sales and service network

## **1. ABSORPTION**

**Up to 40% lower energy consumption.**

## **2. COMPRESSOR**

**Up to 50% lower energy consumption.**







# HIPRO EVOLUTION

## THE PREMIUM EXPERIENCE

A sustainable minibar is a smart minibar. The new HiPro range is just that. It's also more efficient with improved cooling and up to 40% less energy consumption. After more than 50 years in the hotel

business and 6 million installed units, we're proud to say that we're pioneering the hotel industry. Again.



<b>HIPRO LINE TECHNICAL DATA</b>					
<b>MODEL</b>	<b>EVOLUTION A30S</b>	<b>EVOLUTION A40S</b>	<b>EVOLUTION C40S</b>	<b>EVOLUTION C40G</b>	
<b>Cooling technology</b>	Absorption	Absorption	Compressor	Compressor	
<b>Model class (l)</b>	30	40	40	40	
<b>Volume (l)</b>	26	33	33	33	
<b>Door type</b>	Solid door	Solid door	Solid door	Glass door	
<b>Product dimensions (W×H×D) mm</b>	384 x 520 x 446	405 x 550 x 466	405 x 550 x 481	405 x 550 x 481	
<b>Weight (kg)</b>	13.7	15.3	17.5	20.1	
<b>Sliding hinge kit</b>	Yes	Yes	Yes	-	
<b>Can be built-in/integrated</b>	With ventilation*	With ventilation*	With ventilation*	With ventilation*	
<b>Variable door hinge</b>	Yes	Yes	Yes	Yes	
<b>LED interior light</b>	Ambient top + bottom	Ambient top + bottom	Ambient top + bottom	Ambient top + bottom	
<b>Input rating (W)</b>	60–70	60–70	45	45	
<b>Energy consumption (EU Std, kWh/annum)</b>	195	210	47	56	
<b>Noise level (dB[A])</b>	0	0	33	33	
<b>Features</b>	<ul style="list-style-type: none"> <li>Noiseless</li> <li>Ambient illumination</li> <li>1 x door rack with decorative trim</li> <li>1 x tempered glass shelf</li> <li>Aluminium handle</li> <li>Adjustable shelf</li> <li>Decorative panel on evaporator</li> <li>Long lasting technology</li> </ul>	<ul style="list-style-type: none"> <li>Noiseless</li> <li>Ambient illumination</li> <li>2 x door racks with decorative trim</li> <li>2 x tempered glass shelves</li> <li>Aluminium handle</li> <li>Adjustable shelves</li> <li>Decorative panel on evaporator</li> <li>Long lasting technology</li> </ul>	<ul style="list-style-type: none"> <li>High Performance</li> <li>Integrated silent mode<sup>^</sup></li> <li>Ambient illumination</li> <li>2 x door racks with decorative trim</li> <li>2 x tempered glass shelves</li> <li>Adjustable shelves</li> <li>Aluminium handle</li> </ul>	<ul style="list-style-type: none"> <li>High performance</li> <li>Integrated silent mode<sup>^</sup></li> <li>Ambient illumination</li> <li>2 x door racks with decorative trim</li> <li>2 x tempered glass shelves</li> <li>Adjustable shelves</li> <li>Aluminium handle</li> </ul>	
<b>Options</b>	Key lock connectivity	Key lock connectivity	Key lock connectivity	Key lock connectivity	
<b>SKU</b>	9600029248 (Right Hinge) 9600029249 (Left Hinge)	9600029098 (Right Hinge) 9600029099 (Left Hinge)	9600029110 (Right Hinge) 9600029109 (Left Hinge)	9600029114 (Right Hinge) 9600029113 (Left Hinge)	

\*For ventilation guidelines see p. 13

<sup>^</sup>Manual activation

# HIPRO ALPHA

## DEVELOPED WITH YOUR BUSINESS EXPERIENCE IN MIND

Many business travellers are constantly on the move living a suitcase life. Most days represent hard work with long hours – arriving late to the room preparing for the next day’s meeting while burning the midnight oil. That’s why the minibar is a much-appreciated feature offering cold beverages and energising snacks. For the leisure tourist,

the hotel minibar is an opportunity to enjoy a cold beverage at the late arrival check-in, after a long city excursion and while getting ready for a fun night out – or perhaps waking up with a need to quench the thirst.





HIPRO LINE TECHNICAL DATA				
	ALPHA A30S	ALPHA A40S	ALPHA C40S	ALPHA C40G
<b>Cooling technology</b>	Absorption	Absorption	Compressor	Compressor
<b>Model class (l)</b>	30	40	40	40
<b>Volume (l)</b>	26	33	33	33
<b>Door type</b>	Solid door	Solid door	Solid door	Glass door
<b>Product dimensions (W x H x D) mm</b>	384 x 520 x 446	405 x 550 x 466	405 x 550 x 481	405 x 550 x 481
<b>Weight (kg)</b>	13.7	15.3	17.5	20.1
<b>Sliding hinge kit</b>	Yes	Yes	Yes	-
<b>Can be built-in/integrated</b>	With ventilation*	With ventilation*	With ventilation*	With ventilation*
<b>Variable sliding hinge</b>	Yes	Yes	Yes	Yes
<b>LED interior light</b>	LED top light	LED top light	LED top light	LED top light
<b>Input rating (W)</b>	60–70	60–70	45	45
<b>Energy consumption (EU Std, kWh/annum)</b>	195	210	47	56
<b>Noise level (dB[A])</b>	0	0	33	33
<b>Features</b>	<ul style="list-style-type: none"> <li>Noiseless</li> <li>1 x door rack</li> <li>1 x plastic shelf</li> <li>Adjustable shelf</li> <li>Long lasting technology</li> </ul>	<ul style="list-style-type: none"> <li>Noiseless</li> <li>2 x door rack</li> <li>1 x plastic shelf</li> <li>Adjustable shelf</li> <li>Long lasting technology</li> </ul>	<ul style="list-style-type: none"> <li>High performance</li> <li>Integrated silent mode<sup>^</sup></li> <li>2 x door racks</li> <li>1 x plastic shelf</li> <li>Adjustable shelf</li> </ul>	<ul style="list-style-type: none"> <li>High Performance</li> <li>Integrated silent mode<sup>^</sup></li> <li>1 x door rack</li> <li>1 x plastic shelf</li> <li>Adjustable shelf</li> </ul>
<b>Options</b>	Key lock	Key lock	Key lock	Key lock
<b>SKU</b>	9600028960 (Right Hinge) 9600028961 (Left Hinge)	9600028964 (Right Hinge) 9600028965 (Left Hinge)	9600049599 (Right Hinge) 9600049600 (Left Hinge)	9600029283 (Right Hinge) 9600029284 (Left Hinge)

\*For ventilation guidelines see p. 13

<sup>^</sup>Manual activation



# WE DEVELOPED HIPRO WITH HOTEL GUESTS IN MIND

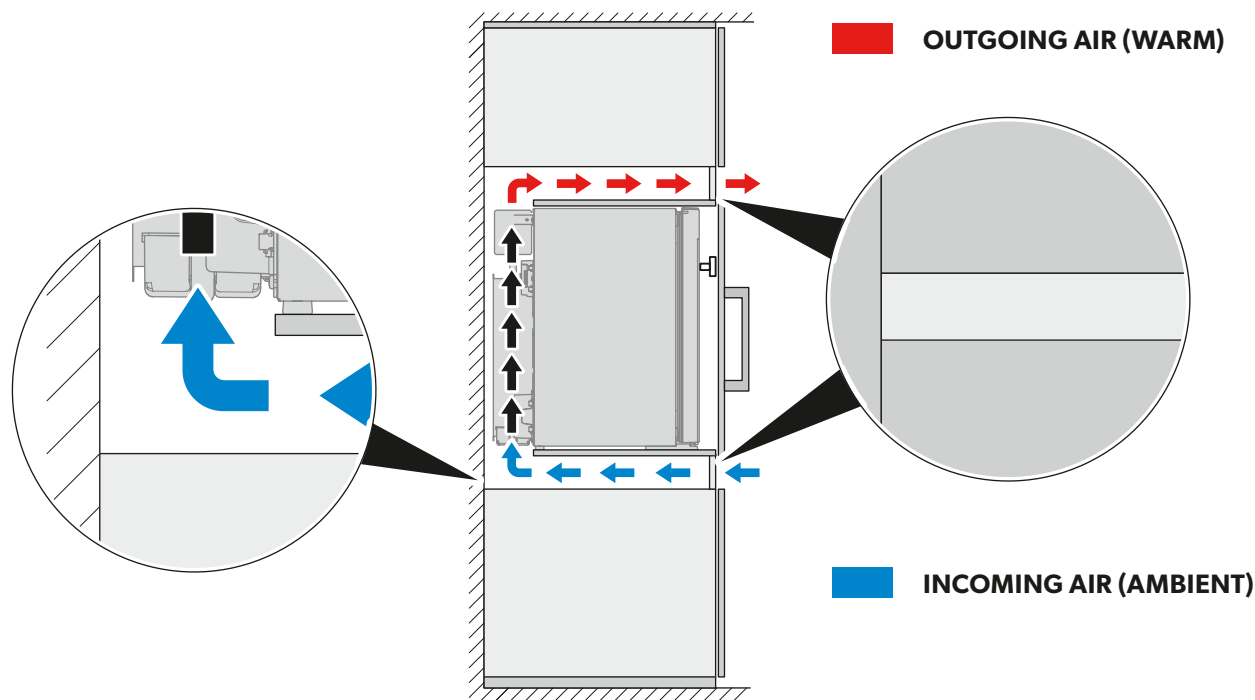
A well-stocked minibar is an expected and appreciated hotel room feature for well-travelled hotel guests. Let's have a deeper look at some outstanding features we offer to the market with the all-new HiPro minibar generation:



# VENTILATION GUIDELINE

To ensure optimum cooling performance with minimum energy consumption, several basic principles need to be followed when installing a minibar. The heat which the cooling unit extracts from the refrigerator interior is emitted at the back of the minibar. There must be sufficient ventilation here to prevent a build-up of heat. The free ventilation space for the new Hipro Absorption and Compressor for incoming air should be at least  $150\text{ cm}^2$  and outgoing air at least  $200\text{ cm}^2$ , incoming air should be at least  $150\text{ cm}^2$  and outgoing air at

least  $200\text{ cm}^2$ . The distance from the rear of the minibar to the rear wall of the furniture must be at least 2 cm. When installing the minibar, ensure that it is standing on a stable and horizontal surface, and not directly near a heat source.

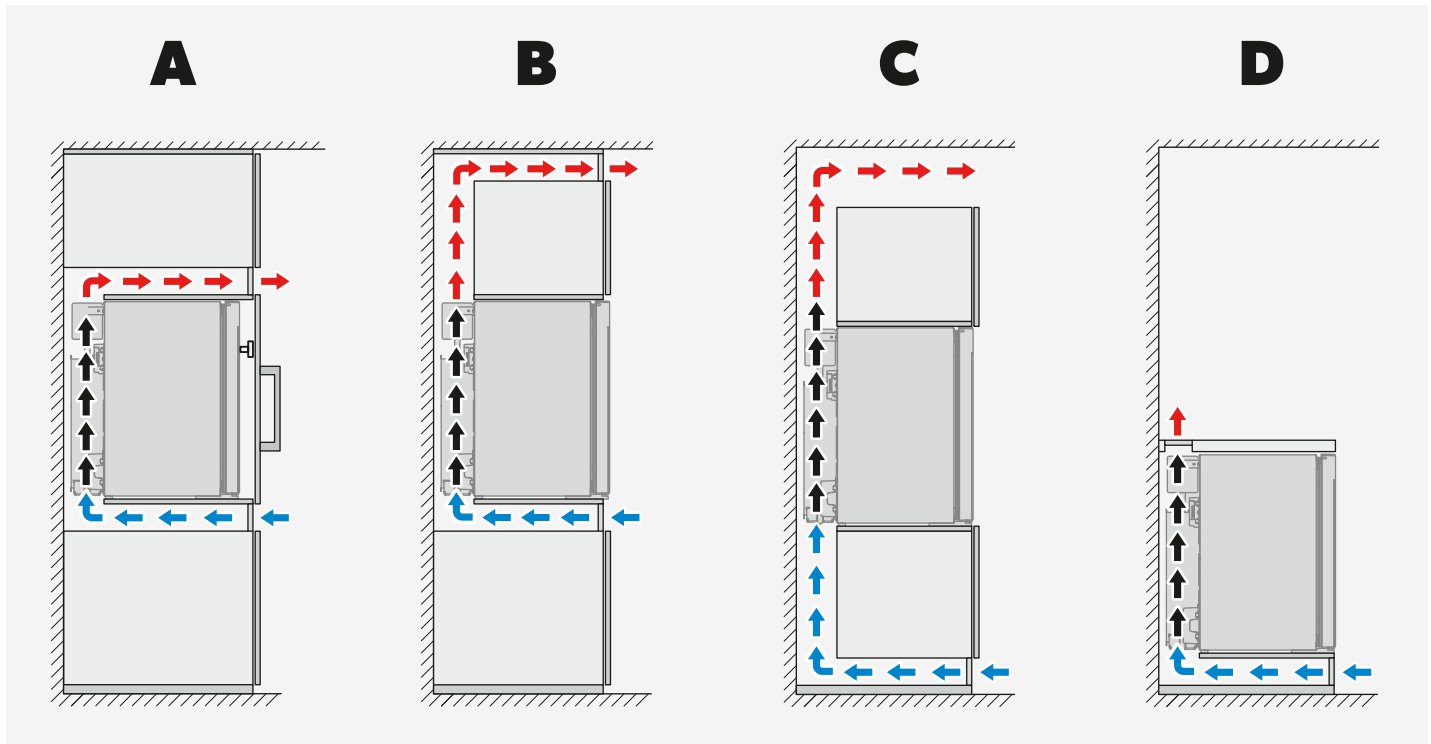


# THINGS TO NOTE WHEN INSTALLING A BUILT-IN MINIBAR

- The minibar must be placed on a surface that is level in both directions
- There should be a 2 cm clearance to the wall
- Ventilation must be provided as shown in the drawings below (A, B, C or D)
- The entire cooling unit should protrude into the ventilation duct as shown below
- Air passing through the duct must not be warmed up by any source of heat
- Ventilation grills, if used, must have a free opening of at least 150 cm<sup>2</sup> incoming air and 200 cm<sup>2</sup> outgoing air for the new Hipro Absorption and Compressor



Impact of airflow video



Insufficient airflow results in a shortened life span and a reduced cooling performance. Observe the minimum spacings when installing the minibar to furniture.

# THE WORLD'S BEST MINIBARS

## THE ALL-NEW DOMETIC HIPRO MINIBAR RANGE

Premium can't be measured. It's all about the first impression, elegant design, and the silence that your guests appreciate. What can be measured is efficiency. With improved cooling performance and up to 40% lower power consumption, it's clear to see why the HiPro range are considered the world's best minibars.

1

### LOWER ENERGY CONSUMPTION

Dometic's new HiPro range will reduce energy consumption by up to 40%.

2

### IMPROVED COOLING POWER

Improved cooling capabilities with updated and optimised functionality.

3

### PREMIUM GUEST EXPERIENCE

HiPro will be an attractive and sales-promoting feature in the guest room.

4

### SMART CONNECTIVITY

The new connectivity software will simplify F&B operations and support remote monitoring\*.

5

### A STRONG PARTNER

With more than 50 years of experience and more than 6 million installed units; we are a proven partner.

6

### OUR SUSTAINABLE PROMISE

Reduction of manufacturing footprint and energy consumption.

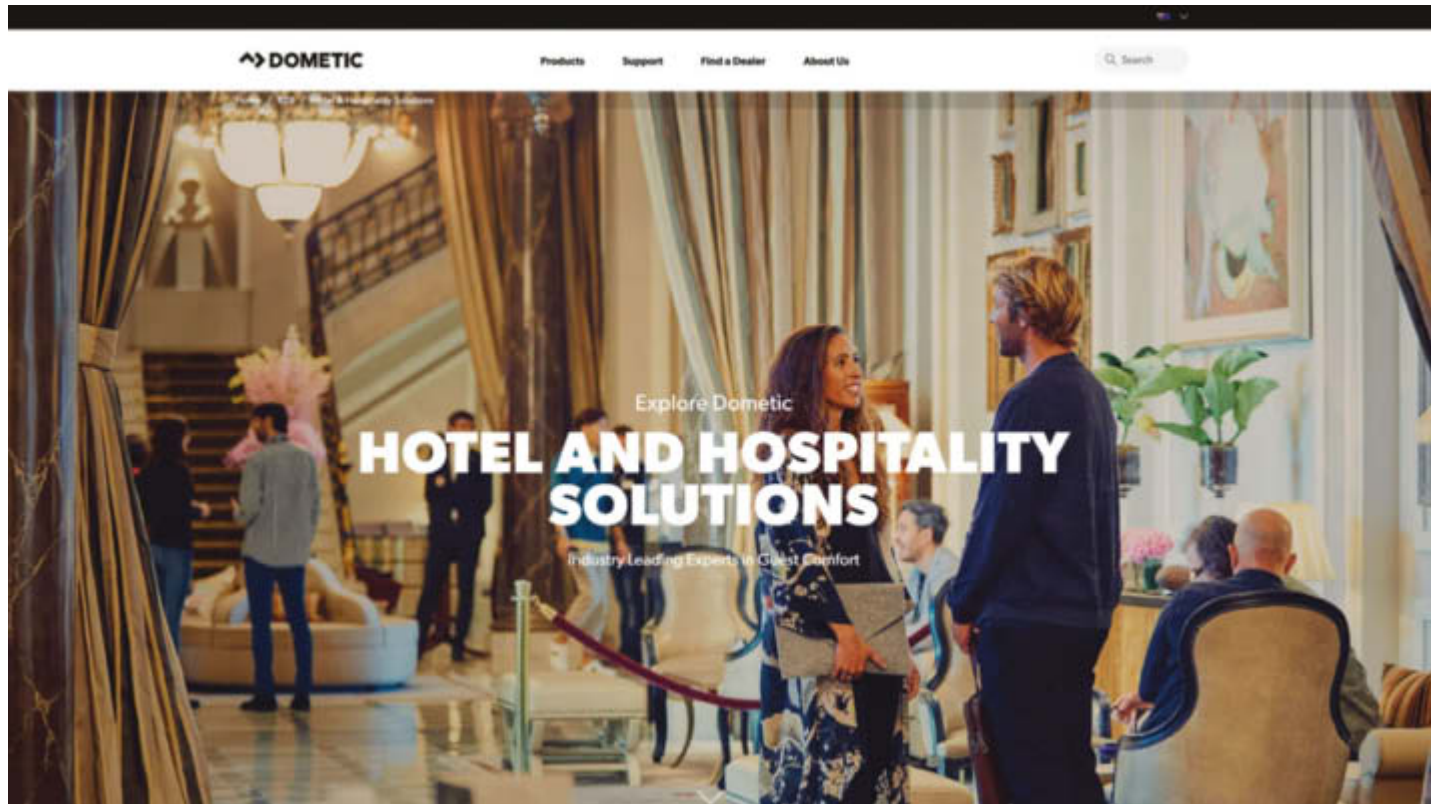
\* Evolution range only

# DISCOVER YOUR FULL OPTIONS

## THIS IS HOW YOU FIND ALL DOMETIC HOSPITALITY SOLUTIONS ONLINE:

Browse to **dometic.com**. Here you get an overview of all our solutions, including safes, minibars, and new HiPro, as well as special products for hospitality, catering, your patio, and wine refrigeration.

In any case of further questions, needs or quotas, please contact us.



---

**AUSTRALIA**  
**DOMETIC AUSTRALIA PTY LTD.**

**Victoria**

PO Box 1140  
CLAYTON SOUTH VIC 3169  
Tel +61 (03) 9239 1000  
Fax +61 (03) 9239 1099  
Email [lodging@dometic.com.au](mailto:lodging@dometic.com.au)

**Queensland**

PO Box 2495  
BURLEIGH BC QLD 4220  
Tel +61 (07) 5507 6000  
Fax +61 (07) 5507 6001  
Email [lodging@dometic.com.au](mailto:lodging@dometic.com.au)

**Western Australia**

12 Prosperity Ave  
WANGARA WA 6065  
Tel +61 (08) 9303 3555  
Fax +61 (08) 9303 3577  
Email [lodging@dometic.com.au](mailto:lodging@dometic.com.au)

**NEW ZEALAND**  
**DOMETIC NEW ZEALAND LTD.**

**Auckland**

PO Box 12011  
Penrose, Auckland 1642  
Tel +64 (9) 622 1490  
Fax +64 (9) 622 1573  
Email [customerservices@dometic.co.nz](mailto:customerservices@dometic.co.nz)